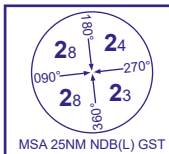
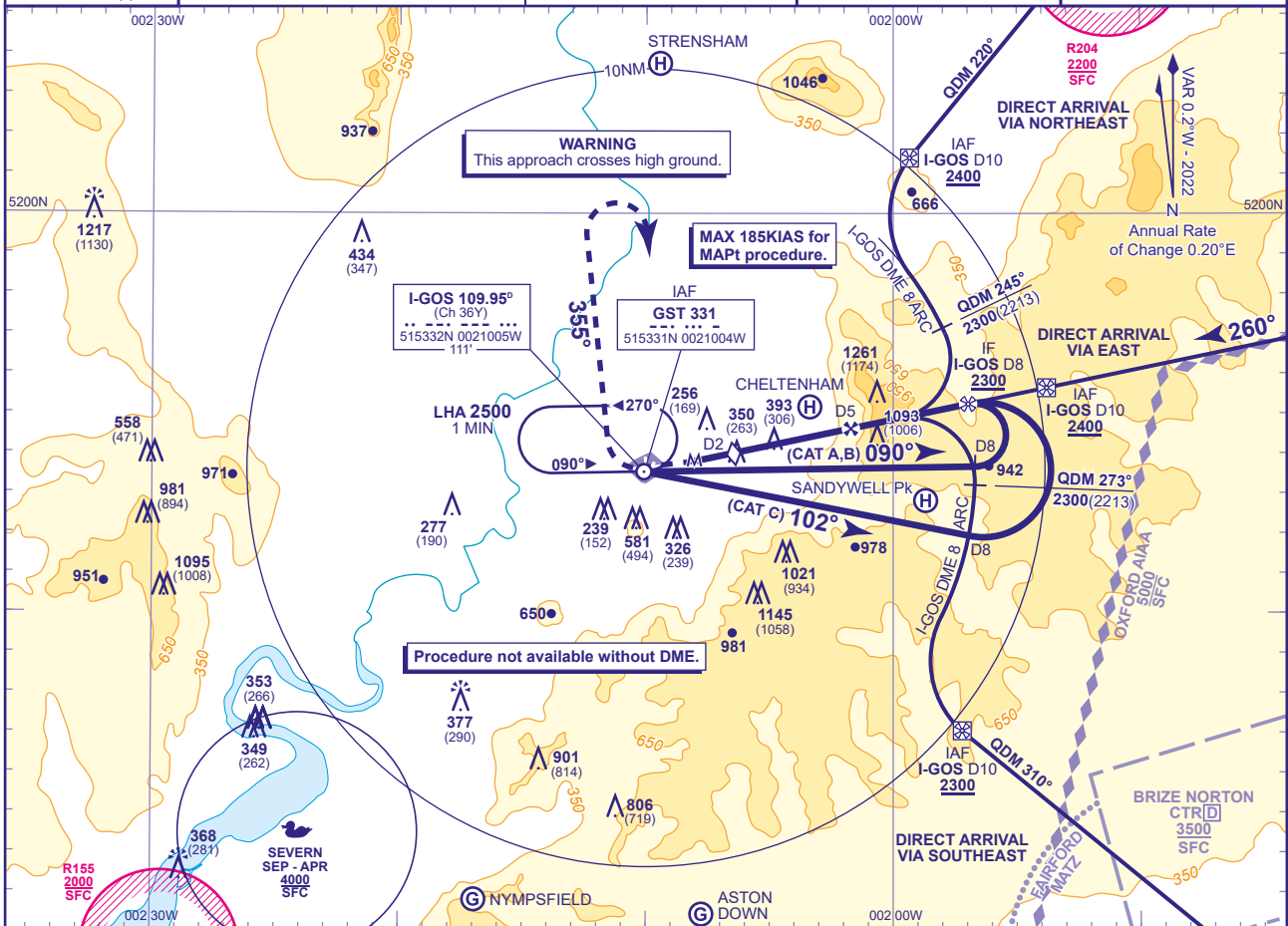


INSTRUMENT APPROACH CHART - ICAO

GLOUCESTERSHIRE
NDB(L)/DME
RWY 27
(ACFT CAT A,B,C)

APP	128.555	GLOSTER APPROACH	AD ELEVATION	101
TWR	122.905	GLOSTER TOWER	THR ELEVATION	87
RAD	128.555, 120.980	GLOSTER RADAR	OBSTACLE ELEVATION	1261 AMSL (1174) (ABOVE THR)
ATIS	127.480	GLOSTER INFORMATION	BEARINGS ARE MAGNETIC	

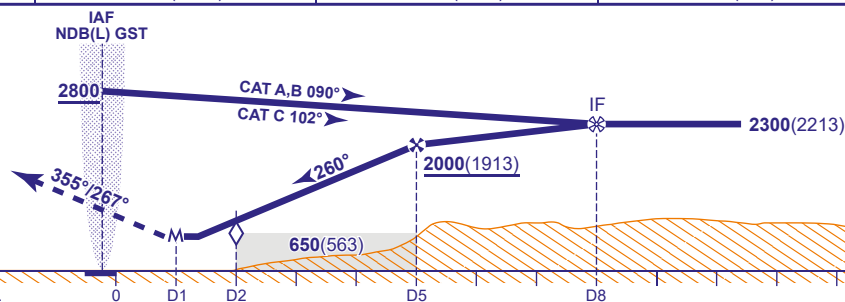
TRANSITION ALTITUDE
3000

RECOMMENDED PROFILE Gradient 6.13%, 373FT/NM

DME I-GOS	5	4	3	2 (SDF)
ALT(HGT)	2000(1913)	1630(1543)	1250(1163)	880(793)

MAPt (M) I-GOS DME 1

Climbing turn right onto track 267°M to 900 then turn right onto 355°M climbing to 2800, then turn right to NDB(L) GST at 2800.



DME I-GOS zero ranged to THR RWY 27.

Aircraft Category		A	B	C	Rate of descent	G/S KT	160	140	120	100	80
OCA (OCH)	Procedure	600(513)	600(513)	600(513)		FT/MIN	990	870	750	620	500
VM(C)OCA (OCH AAL)	Total Area	1000(899)	1000(899)	1500(1399)							
	North of RWYs 04/22 and 09/27	830(729)	830(729)								

- NOTES 1 FAT offset 4.8° from RWY C/L. FAT intercepts C/L nominally 1.2NM before THR.
2 NDB(L) GST occasionally subject to erroneous indications within 5NM of Droitwich on approach to RWY 27.
3 Aircraft will normally be required to hold not lower than 4000 or the equivalent FL.

CHANGE (7/21): DEFFORD HIRTA REMOVED. MAG VAR. MAG TRACKS. AD 2.10 OBSTACLES R2VISD. ULLENWOOD HELI REMOVED. SANDYWELL PK HELI ADDED.